

**NOTICE!!**

**These documents have been scanned!**

**Do not place un-scanned documents beneath this notice!**

**Do not remove this notice from this file!**

GPO Jacket No. 560-102  
Print Order 61540  
Rise Business Services, LLC  
Job=AZ15 4/29/2019



Box Number= AZ15005



Claim Begin-End: AMC446010-AMC446011

1 Initial Receipt



AZ15005-18

AMC450400-AMC453366

**United States Department of the Interior**  
**Bureau of Land Management**  
 DIV OF LANDS, MINRLS & ENERGY  
 ONE N CENTRAL AVE  
 PHOENIX, AZ 85004 -4427  
 Phone: 602-417-9200

Receipt

No: 3994185

<b>Transaction #:</b> 4104499	
<b>Date of Transaction:</b> 10/11/2017	
CUSTOMER:	
	ROADRUNNER PROSPECTORS CLUB INC PO BOX 56804 PHOENIX, AZ 85079-6804 US



LINE #	QTY	DESCRIPTION	REMARKS	UNIT PRICE	TOTAL
1	2.00	LOCATABLE MINERALS / MINING CLAIMS-NEW, UNADJUD, ONE OR MORE AUTH NOS / NEW MINING CLAIM PROCESSING FEE CASES: AMC446010/\$20.00, AMC446011/\$20.00		- n/a -	40.00
2	2.00	LOCATABLE MINERALS / MINING CLAIMS-NEW, UNADJUD, ONE OR MORE AUTH NOS / NEW MINING CLAIMS LOCATION FEE CASES: AMC446010/\$37.00, AMC446011/\$37.00		- n/a -	74.00
3	2.00	LOCATABLE MINERALS / MINING CLAIMS-NEW, UNADJUD, ONE OR MORE AUTH NOS / NEW MINING CLAIMS MAINTENANCE FEE CASES: AMC446010/\$155.00, AMC446011/\$155.00		- n/a -	310.00
<b>TOTAL:</b>					<b>\$424.00</b>

PAYMENT INFORMATION			
1	AMOUNT:	424.00	POSTMARKED: N/A
	TYPE:	CHECK	RECEIVED: 10/11/2017
	CHECK NO:	9290	
	NAME:	ROADRUNNER PROSPECTORS CLUB INC PO BOX 56804 PHOENIX AZ 85079-6804 US	

REMARKS

This receipt was generated by the automated BLM Collections and Billing System and is a paper representation of a portion of the official electronic record contained therein.

**NOTICE!!**

**These documents have been scanned!**

**Do not place un-scanned documents beneath this notice!**

**Do not remove this notice from this file!**

GPO Jacket No. 560-102  
Print Order 61540  
Rise Business Services, LLC  
Job=AZ15 4/29/2019



Box Number= AZ15005



Claim Begin-End: AMC446010-AMC446011

2 Correspondence



AZ15005-18

AMC450400-AMC453366

**NO  
DOCUMENTS  
FOUND**

NO DOCUMENTS FOUND  
NO DOCUMENTS FOUND

**NOTICE!!**

**These documents have been scanned!**

**Do not place un-scanned documents beneath this notice!**

**Do not remove this notice from this file!**

GPO Jacket No. 560-102  
Print Order 61540  
Rise Business Services, LLC  
Job=AZ15 4/29/2019



Box Number= AZ15005



Claim Begin-End: AMC446010-AMC446011

3 Transfers



AZ15005-18

AMC450400-AMC453366

**NO  
DOCUMENTS  
FOUND**

NO DOCUMENTS FOUND  
NO DOCUMENTS FOUND

**NOTICE!!**

**These documents have been scanned!**

**Do not place un-scanned documents beneath this notice!**

**Do not remove this notice from this file!**

GPO Jacket No. 560-102  
Print Order 61540  
Rise Business Services, LLC  
Job=AZ15 4/29/2019



Box Number= AZ15005



Claim Begin-End: AMC446010-AMC446011

4 Annual Filings



AZ15005-18 AMC450400-AMC453366

329013	247112	313473	<del>29334</del>	374511
339964	350275	130488	129334	365711
364688	331232	331455	157621	191670
64830	321061	<del>300888</del>	102389	348628
350903	314626	356380	126534	430611
251042	244561	95198	170911	328689
68526	196365	358378	11413	328593
433937	258455	358379	329388	371802
440315	446010	48976	364820	368415
326754	430534	254410	366267	366267
314304	411385	328742	427326	371350
364340	407030	74734	89414	96051
	327930	326311	300332	451088
	328302	291104	82212	362558
	374726	410363	142355	429664
	448723	406356	437448	435083
	450543	374274	329318	435561
	326311	326772	76950	126534



368415 374511  
 366267 365711  
 371350 191670  
 348628  
 430611  
 328689

**MAINTENANCE FEE PAYMENT**

Claimant Name: Road Runner Prospectors Club  
 Address: PO BOX 56304 AGENT BOB  
 City: PHX State: AZ Zip: 85079 HOVA  
 Telephone: 602-818-0835  
 E-mail address: \_\_\_\_\_  
 Signature: [Signature]

328593  
 371802  
 RECEIVED  
 ARIZONA STATE OFFICE  
 2018 AUG 22 P 2:27  
 PHOENIX, ARIZONA  
 BLM  
 Date  
 Stamp

Check here if this is a change of address.

LINE NO.	AMC NUMBER	CLAIM/SITE NAME	COUNTY RECORDER DATA (If available)	TWP	RNG	SEC
1	374514	CATCEN LISA				
2						
3		(SEE LIST)				
4						
5						
6						
7						
8						
9						
10						

List additional claims on Form MCF114.

Bureau of Land Management  
 Arizona State Office  
[www.blm.gov/az/](http://www.blm.gov/az/)

No. of Claims\*: 283 x \$155 = 43865  
 Check No: 9459 Init. PER  
 Receipt No.: 424956  
 For BLM Use Only

\* \$155 per lode mining claim, mill site, or tunnel site; and \$155 for each 20 acres or portion thereof for each placer mining claim.

Form: MCF112  
 Revised July 2014

This form is available from the Arizona Geological Survey and may be reproduced.

**ENTERED**  
 AUG 28 2018  
 BY: RYM

RRPC Master Claims List as of September 1, 2018

\$ 43,865 <<Total Projected Maintenance Fee for 2018

283 \$ 155.00 <Enter Current Rate

#	Map	AMC #	Claim Name	County	Cnty Recorder Data Record/Book Page	Township	Range	Section	Total Acres	20 Acre Segments	Maint. Fee	Lode /Placer	PNF Lands	Original 2012 Acres	Comments
272	<< Total Claims														
1	1	374513	Caitlin Lisa	Yavapai	4452 917	12.5, 13N	1W	23, 24, 35, 36	20.0	1	\$ 155	Placer	PNF	20	BLM corrected name to Caitlin Lisa
2	1	374512	Cole Ryan	Yavapai	2014-0056442	12.5N	1W	24	18.5	1	\$ 155	Placer	PNF	20	Amended south border to 1320 feet
3	1	365711	Diggens Paradise	Yavapai	3864391 4269 775	12.5N	1W	26	17.1	1	\$ 155	Placer	PNF	20	
4	1	191670	Roadrunner #1	Yavapai	1514 754	12.5N	1W	25	12.85	1	\$ 155	Placer	PNF	12.85	
5	1	191671	Roadrunner #2	Yavapai	1514 756	12.5N	1W	25	20	1	\$ 155	Placer	PNF	20	
6	1	348628	Vira Anne 1	Yavapai	2015-0008296	12.5N	1W	27	17.3	1	\$ 155	Placer	PNF	40	Amended north border to 1320 feet
7	1	430611	Vira Anne 2	Yavapai	2014-0008298	12.5N	1W	27	16.50	1	\$ 155	Placer	PNF	New	
8	2	328703	Ceedee #1	Yavapai	2746 703	8N	1W	5	20	1	\$ 155	Placer	PNF	20	
9	2	328593	Ceedee #2	Yavapai	2742 961	8N	1W	5	20	1	\$ 155	Placer	PNF	20	
10	2	328594	Ceedee #3	Yavapai	2742 963	8N	1W	5	20	1	\$ 155	Placer	PNF	20	
11	2	328595	Ceedee #4	Yavapai	2742 965	8N	1W	5	20	1	\$ 155	Placer	PNF	20	
12	2	328704	Ceedee #5	Yavapai	2746 705	8N	1W	5	20	1	\$ 155	Placer	PNF	20	
13	2	328597	Ceedee #7	Yavapai	2742 969	8N	1W	4	20	1	\$ 155	Placer	PNF	20	
14	2	328598	Ceedee #8	Yavapai	2742 971	8N	1W	4	20	1	\$ 155	Placer	PNF	20	
15	3	374511	Carolyn D	Yavapai	4444 69	13N	3W	29	20.0	1	\$ 155	Placer	PNF	20	
16	3	371802	Happy Times	Yavapai	4390 621	13N	3W	29, 32	20	1	\$ 155	Placer	PNF	20	
17	3	368415	Jacks Hideaway	Yavapai	4308 863	13N	3W	29	20	1	\$ 155	Placer	PNF	20	
18	3	366268	Renee's Best Chance	Yavapai	4281 507	13N	3W	32	20	1	\$ 155	Placer	PNF	20	
19	3	371803	Saddle Tramps	Yavapai	4390 622	13N	3W	29	20	1	\$ 155	Placer	PNF	20	
20	3	366270	Stuck Duck	Yavapai	4281 506	13N	3W	32	20	1	\$ 155	Placer	PNF	20	
21	3	371350	Wigers Wish	Yavapai	4372 442	13N	3W	32	20	1	\$ 155	Placer	PNF	20	
22	4	96051	JDR #1	Yavapai	1267 825	12.5N	2W	21	20	1	\$ 155	Placer	PNF	20	
23	4	96052	JDR #2	Yavapai	1267 827	12.5N	2W	21	20	1	\$ 155	Placer	PNF	20	
24	4	96053	JDR #3	Yavapai	1267 829	12.5N/13N	2W/2W	21/33	20	1	\$ 155	Placer	PNF	20	
25	5	451090	Chuck's Corner	Yavapai	2018-0022976	9.5 N	2E	28/29	20	1	\$ 155	Placer		New	May-18
26	5	328705	Genes Dream	Yavapai	2746 707	9.5N	2E	20, 21	20	1	\$ 155	Placer		20	
27	5	362558	Holly Marie	Yavapai	3769442 4190 312	9.5N	2E	20, 21	11.45	1	\$ 155	Placer		2.26	
28	5	429703	Janet Lynn 2-1	Yavapai	2014-0040485	10N	1E	12	20	1	\$ 155	Placer	PNF	New	
29	5	435087	Janet Lynn 2-2	Yavapai	2015-0052258	10N	1E	12, 13	15	1	\$ 155	Placer	PNF	New	
30	5	435088	Janet Lynn 2-3	Yavapai	2015-0052259	10N	1E	12, 13	15	1	\$ 155	Placer	PNF	New	
31	5	435569	Laura Kay 1-1	Yavapai	2015-0055540	10N	1E	12	20	1	\$ 155	Placer	PNF	New	
32	5	435570	Laura Kay 1-2	Yavapai	2015-0055541	10N	1E	12	20	1	\$ 155	Placer	PNF	New	
33	5	435571	Laura Kay 1-3	Yavapai	2015-0055542	10N	1E	12	20	1	\$ 155	Placer	PNF	New	
34	5	126538	Mandala 10	Yavapai	1371 343	10N	2E	31	20	1	\$ 155	Placer	PNF	20	
35	5	129334	Mandala 12	Yavapai	1376 706	10N	2E	30	20	1	\$ 155	Placer		27.95	Amended to 20 acres 08/14.
36	5	157621	Mandala 14	Yavapai	1437 981	10N	2E	30	20	1	\$ 155	Placer		20	
37	5	102389	Mandala 2 & 3	Yavapai	1293 289	10N	2E	30	20	1	\$ 155	Placer		40	
38	5	126535	Mandala 7	Yavapai	1371 337	10N	2E	30	20	1	\$ 155	Placer		20	
39	5	126536	Mandala 8	Yavapai	1371 339	10N	2E	30	20	1	\$ 155	Placer		20	
40	5	126537	Mandala 9	Yavapai	1371 341	10N	2E	30	20	1	\$ 155	Placer		20	
41	5	170911	Wednesday Hope #1	Yavapai	1467 691	10N	2E	31	20	1	\$ 155	Placer		20	
42	5	11413	Wednesday Hope #4	Yavapai	1015 726, 1799 33, 1569 374	9.5N/10N	2E/2E	20/32	20	1	\$ 155	Placer		20	
43	6	329388	Bad Luck	Yavapai	2780 912	12N	1W	14, 23	20	1	\$ 155	Placer	PNF	20	
44	6	235841	Betty #4	Yavapai	1713 778	12N	1W	14	20	1	\$ 155	Placer	PNF	20	
45	6	235842	Betty #5	Yavapai	1713 780	12N	1W	14	20	1	\$ 155	Placer	PNF	20	
46	6	174224	Big Rock #1	Yavapai	1469 76	12N	1W	10, 11	20	1	\$ 155	Placer	PNF	20	
47	6	174225	Big Rock #2	Yavapai	1469 78	12N	1W	10	20	1	\$ 155	Placer	PNF	20	
48	6	236096	Gary's Place #1A	Yavapai	1714 193	12N	1W	14	20	1	\$ 155	Placer	PNF	20	
49	6	329390	Good Luck	Yavapai	2780 916	12N	1W	23, 24	20	1	\$ 155	Placer	PNF	20	
50	6	329391	Great Luck	Yavapai	2780 918	12N	1W	24	20	1	\$ 155	Placer	PNF	20	
51	6	329389	No Luck	Yavapai	2780 914	12N	1W	23	20	1	\$ 155	Placer	PNF	20	
52	6	364821	Ray's Right Place	Yavapai	3837647 4247 553	12N	1W	24	17.0	1	\$ 155	Placer	PNF	40	BLM corrected their records to 17 acres
53	7	366267	Cobi's Gold	Yavapai	4281 505	11.5N	1E	19	20	1	\$ 155	Placer	PNF	20	
54	7	427326	Rexs' Place	Yavapai	4914 661	11.5N	1E	30	20	1	\$ 155	Placer	PNF	20	
55	7	366269	Rough Road	Yavapai	4281 503	11.5N	1E	30	20	1	\$ 155	Placer	PNF	20	
56	7	366271	Tegan's Bank	Yavapai	4281 504	11.5N	1E	30	20	1	\$ 155	Placer	PNF	20	
57	7	89420	Wolf #1	Yavapai	0961 673, 90 203541	11.5N	1E	31	20	1	\$ 155	Placer	PNF	20	Quit Claim Deed to RR is recorded in Maricopa County
58	7	89421	Wolf #2	Yavapai	0961 674, 2207 41	11.5N	1E	31	20	1	\$ 155	Placer	PNF	20	
59	7	89422	Wolf #3	Yavapai	0961 675, 2207 41	11.5N	1E	31	20	1	\$ 155	Placer	PNF	20	
60	7	89423	Wolf #4	Yavapai	0961 676, 2207 41	11 5N/11N	1E/1E	31/6	20	1	\$ 155	Placer	PNF	20	
61	7	300332	Wolf #5	Yavapai	2208 526	11.5N	1E	31	20	1	\$ 155	Placer	PNF	20	
62	7	300333	Wolf #6	Yavapai	2208 524	11N	1E	5, 6	20	1	\$ 155	Placer	PNF	20	
63	8	82213	Bean Bag #1	Yavapai	0965 338, 1252 276	12N	1W	28	20	1	\$ 155	Placer	PNF	20	1252 276 Added
64	8	435561	Bean Bag 2-1	Yavapai	2015-0055543	10N	2E	30	20	1	\$ 155	Placer	PNF	New	

RECEIVED  
 AZ STATE OFFICE  
 2018 AUG 22 PM 2:21  
 PHOENIX, ARIZONA

RRPC Master Claims List as of September 1, 2018

\$ 43,865 <<Total Projected Maintenance Fee for 2018

283 \$ 155.00 <Enter Current Rate

272 << Total Claims

#	Map	AMC #	Claim Name	County	Cnty Recorder Data Record/Book Page	Township	Range	Section	Total Acres	20 Acre Segments	Maint. Fee	Lode /Placer	PNF Lands	Original 2012 Acres	Comments
65	8	435562	Bean Bag 2-2	Yavapai	2015-0055544	10N	2E	30	20	1	\$ 155	Placer	PNF	New	
66	8	328605	Burro #1	Yavapai	2742 987	12N	1W	33	20	1	\$ 155	Placer	PNF	20	
67	8	328606	Burro #2	Yavapai	2742 985	11N	1W	4	20	1	\$ 155	Placer	PNF	20	
68	8	142356	Donkey Mine #4	Yavapai	1422 292	12N	1W	33	20	1	\$ 155	Lode	PNF	20	Filed as lode claim
69	8	437451	Goodwin 1-1	Yavapai	2016-0019094	12N	1W	28, 33	20	1	\$ 155	Placer	PNF	31.68	Amended to 20 acres March 2016
70	8	437452	Goodwin 1-2	Yavapai	2016-0019093	12N	1W	33	20	1	\$ 155	Placer	PNF		New filing, 10 acre - March 2016
71	8	329318	Mercer's Place	Yavapai	2777 216, 3288 700	11N	1W	4	20	1	\$ 155	Placer	PNF	20	
72	8	76951	Merciful Heavens #2	Yavapai	1329 344	12N/11N	1W/1W	33/4	20	1	\$ 155	Placer	PNF	20	BLM doesn't show 11N, 1W, 4
73	8	313473	Patriot 1	Yavapai	2347 704	11N	1W	4	20	1	\$ 155	Placer	PNF	20	
74	8	313474	Patriot 2	Yavapai	2347 706	11N	1W	3, 4	20	1	\$ 155	Placer	PNF	20	
75	8	313475	Patriot 3	Yavapai	2347 708	11N	1W	3	20	1	\$ 155	Placer	PNF	20	
76	8	313476	Patriot 4	Yavapai	2347 710	11N	1W	3	20	1	\$ 155	Placer	PNF	20	
77	8	313477	Patriot 5	Yavapai	2347 712	11N	1W	3	20	1	\$ 155	Placer	PNF	20	
78	8	130489	Protecto 2	Yavapai	1381 826	12N	1W	33	20	1	\$ 155	Lode	PNF	20	Filed as lode claim
79	9	329394	Bonny	Yavapai	2780 924	12N	1W	30	20	1	\$ 155	Placer	PNF	20	
80	9	331455	Chris #1	Yavapai	2919 631	12N	2W	36	20.0	1	\$ 155	Placer	PNF	20	
81	9	329392	Clinton	Yavapai	2780 920	12N/12N	1W/2W	30/25	20	1	\$ 155	Placer	PNF	20	
82	9	329393	Clyde	Yavapai	2780 922	12N/12N	1W/2W	30/25	20	1	\$ 155	Placer	PNF	20	
83	9	356382	Ducbill #1	Yavapai	27429 1402 63	12N	1W	17	20	1	\$ 155	Lode	PNF	20	Filed as lode claim
84	9	356383	Ducbill #2	Yavapai	27430 1402 65	12N	1W	17	20	1	\$ 155	Lode	PNF	20	Filed as lode claim
85	9	95198	Gold Palace I	Yavapai	1256 447	12N	1W	19	20	1	\$ 155	Placer	PNF	20	
86	9	95199	Gold Palace II	Yavapai	1256 450	12N	1W	19	20	1	\$ 155	Placer	PNF	20	
87	9	95200	Gold Palace III	Yavapai	1256 453	12N	1W	19	20	1	\$ 155	Placer	PNF	20	
88	9	95201	Gold Palace IV	Yavapai	1256 456	12N	1W	19	20	1	\$ 155	Placer	PNF	20	
89	9	95202	Gold Palace V	Yavapai	1256 459	12N	1W	19	20	1	\$ 155	Placer	PNF	20	
90	9	95203	Gold Palace VI	Yavapai	1256 462	12N	1W	19	20	1	\$ 155	Placer	PNF	20	BLM shows More Than Lots of Rock
91	9	95204	Gold Palace VII	Yavapai	1256 465	12N	1W	19	20	1	\$ 155	Placer	PNF	20	BLM shows Lots of Rock
92	9	95205	Gold Palace VIII	Yavapai	1256 468	12N	1W	30	20	1	\$ 155	Placer	PNF	20	
93	9	358378	Hidden Treasure	Yavapai	3633816 4076 796	12N/12N	1W/2W	30,31/25,36	20	1	\$ 155	Placer	PNF	20	
94	10	358379	Aquarius Ext. West #1	Yavapai	3633817 4076 797	10N	2E	18	20	1	\$ 155	Placer		20	
95	10	358380	Aquarius Ext. West #2	Yavapai	3633818 4076 798	10N	2E	18	20	1	\$ 155	Placer		20	
96	10	358381	Aquarius Ext. West #3	Yavapai	3633819 4076 799	10N	2E	18	20	1	\$ 155	Placer		20	
97	10	358382	Aquarius Ext. West #4	Yavapai	3633820 4076 800	10N	2E	18	20	1	\$ 155	Placer		20	
98	10	48976	Aquarius #1	Yavapai	0801 192 ***	10N	2E	7	20	1	\$ 155	Lode		20	Can not find Location Notice, Filed as lode claim
99	10	62606	Aquarius #2	Yavapai	1001 437	10N	2E	7	20	1	\$ 155	Placer		20	
100	10	48977	Aquarius #3	Yavapai	0801 194 ***	10N	2E	7, 18	20	1	\$ 155	Placer		20	Can not find Location Notice
101	10	435083	Aquarius Extension 1	Yavapai	2015-0052260	10N	2E	18	20	1	\$ 155	Placer		New	
102	10	435084	Aquarius Extension 2	Yavapai	2015-0052261	10N	2E	18	20	1	\$ 155	Placer		New	
103	10	435085	Aquarius Extension 3	Yavapai	2015-0052262	10N	2E	18	20	1	\$ 155	Placer		New	
104	10	435086	Aquarius Extension 4	Yavapai	2015-0052263	10N	2E	18	20	1	\$ 155	Placer		New	
105	11	254412	Hinny	Yavapai	4069 601, 1341 96, 1807 656	11N	1E	34	16.22	1	\$ 155	Placer	PNF	120	Amended to 16.22 acres 08/14. (Gulch Placer)
106	11	254410	Jackass	Yavapai	4069 605	11N	1E	34, 35	19.97	1	\$ 155	Placer	PNF	40	Amended to 19.97 acres 08/14.
107	11	254411	Jenny	Yavapai	4069 602	11N	1E	34	20	1	\$ 155	Placer	PNF	20	Revised with latest amended claim filing.
108	11	328742	Red Bird #11	Yavapai	2754 072	10N	1E	1	40	2	\$ 310	Placer	PNF	140	OK - 7 person association
109	11	74736	Sharon Lee #3	Yavapai	0912 399	10N	1E	2	20	1	\$ 155	Placer	PNF	160	
110	11	429736	Sharon Lee 1-1	Yavapai	2014-0040492	11N	1E	35, 36	20	1	\$ 155	Placer	PNF	New	
111	11	429737	Sharon Lee 1-2	Yavapai	2014-0040493	11N	1E	35, 36	20	1	\$ 155	Placer	PNF	New	
112	11	429738	Sharon Lee 1-3	Yavapai	2014-0040494	11N	1E	35, 36	20	1	\$ 155	Placer	PNF	New	
113	11	429739	Sharon Lee 1-4	Yavapai	2014-0040495	11N	1E	35, 36	20	1	\$ 155	Placer	PNF	New	
114	11	429740	Sharon Lee 2-1	Yavapai	2014-0040496	11N	1E	35	20	1	\$ 155	Placer	PNF	New	
115	11	429741	Sharon Lee 2-2	Yavapai	2014-0040497	11N	1E	35	20	1	\$ 155	Placer	PNF	New	
116	11	429742	Sharon Lee 2-3	Yavapai	2014-0040498	11N	1E	35	20	1	\$ 155	Placer	PNF	New	
117	11	429743	Sharon Lee 4-1	Yavapai	2014-0040499	10N	1E	1, 2	20	1	\$ 155	Placer	PNF	New	
118	11	429744	Sharon Lee 4-2	Yavapai	2014-0040500	10N	1E	1, 2	20	1	\$ 155	Placer	PNF	New	
119	11	429745	Sharon Lee 4-3	Yavapai	2014-0040501	10N	1E	1, 2	20	1	\$ 155	Placer	PNF	New	
120	11	429746	Sharon Lee 4-4	Yavapai	2014-0040502	10N	1E	1, 2	20	1	\$ 155	Placer	PNF	New	
121	11	429747	Sharon Lee 4-5	Yavapai	2014-0040503	10N	1E	1, 2	20	1	\$ 155	Placer	PNF	New	
122	11	429748	Sharon Lee 4-6	Yavapai	2014-0040504	10N	1E	1, 2	20	1	\$ 155	Placer	PNF	New	
123	12	326313	Carrie #3	Maricopa	93 0174160	7N	3W	30	20	1	\$ 155	Placer		20	
124	12	326314	Carrie #4	Maricopa	93 0174159	7N	3W	30	20	1	\$ 155	Placer		20	
125	12	437934	Carrie 1-1	Maricopa	2016-0242927	7N	3W	31	20	1	\$ 155	Placer		40	Amended to 20 acres March 2016
126	12	437449	Carrie 1-2	Maricopa	2016-0222160	7N	3W	31	20	1	\$ 155	Placer			New filing - March 2016
127	12	326312	Carrie 2-1	Maricopa	2016-0222161	7N	3W	31	20	1	\$ 155	Placer		40	Amended to 20 acres March 2016
128	12	437450	Carrie 2-2	Maricopa	2016-0222162	7N	3W	31	20	1	\$ 155	Placer			New filing - March 2016

RECEIVED  
 PHOENIX, ARIZONA  
 2018 AUG 22 P 2: 21  
 STATE OFFICE

RRPC Master Claims List as of September 1, 2018

\$ 43,865 <<Total Projected Maintenance Fee for 2018

283 \$ 155.00 <Enter Current Rate

#	Map	AMC #	Claim Name	County	Cnty Recorder Data Record/Book Page	Township	Range	Section	Total Acres	20 Acre Segments	Maint. Fee	Lode /Placer	PNF Lands	Original 2012 Acres	Comments
129	12	291104	Cas #2	Maricopa	92 0366284, 88 598383	7N	3W	29	20	1	\$ 155	Placer		20	
130	12	410363	Cass # 10	Maricopa	11 0735632	7N	3W	29	20	1	\$ 155	Placer		20	
131	12	328698	Cass No. 4	Maricopa	93 0885578	7N	3W	29	20	1	\$ 155	Placer		20	
132	12	328699	Cass No. 5	Maricopa	93 0885577	7N	3W	29	20	1	\$ 155	Placer		20	
133	12	328700	Cass No. 6	Maricopa	93 0885576	7N	3W	29	20	1	\$ 155	Placer		20	
134	12	328701	Cass No. 7	Maricopa	93 0885575	7N	3W	29	20	1	\$ 155	Placer		20	
135	12	328702	Cass No. 8	Maricopa	93 0885574	7N	3W	29	20	1	\$ 155	Placer		20	
136	12	406356	Cass No. 9	Maricopa	11 0623988	7N	3W	29	20	1	\$ 155	Placer		20	
137	12	374275	Charles' Dream	Maricopa	06 1491112	7N	3W	20	20	1	\$ 155	Placer		20	
138	12	329800	Gypsy Moth 1	Maricopa	94 0218517	7N	3W	21	20	1	\$ 155	Placer		20	
139	12	329801	Gypsy Moth 2	Maricopa	94 0218518	7N	3W	21	20	1	\$ 155	Placer		20	
140	12	326325	Jake #3	Maricopa	93 0174145	7N	3W	29	20	1	\$ 155	Placer		40	Amended to 20 acres.
141	12	429695	Jake 1-1	Maricopa	2014-0584266	7N	3W	29	20	1	\$ 155	Placer		New	
142	12	429696	Jake 1-2	Maricopa	2014-0584267	7N	3W	29	20	1	\$ 155	Placer		New	
143	12	429697	Jake 1-3	Maricopa	2014-0584268	7N	3W	29	20	1	\$ 155	Placer		New	
144	12	429698	Jake 1-4	Maricopa	2014-0584269	7N	3W	29	20	1	\$ 155	Placer		New	
145	12	429699	Jake 2-1	Maricopa	2014-0584270	7N	3W	29	20	1	\$ 155	Placer		New	
146	12	429700	Jake 2-2	Maricopa	2014-0584271	7N	3W	29	20	1	\$ 155	Placer		New	
147	12	429701	Jake 2-3	Maricopa	2014-0584272	7N	3W	29	20	1	\$ 155	Placer		New	
148	12	429702	Jake 2-4	Maricopa	2014-0584273	7N	3W	29	20	1	\$ 155	Placer		New	
149	12	333426	La Siesta #1	Maricopa	95 0185054	7N	3W	30	20	1	\$ 155	Placer		20	
150	12	333427	La Siesta #3	Maricopa	95 0185055	7N	3W	30	20	1	\$ 155	Placer		20	
151	12	374274	Lori's Place	Maricopa	06 1491113	7N	3W	20	20	1	\$ 155	Placer		20	
152	12	326319	Pat	Maricopa	93 0174152	7N	3W	31	20	1	\$ 155	Placer		20	
153	12	326316	Pennyweight #2	Maricopa	93 0174156	7N	3W	29	20	1	\$ 155	Placer		40	Amended to 20 acres 08/14.
154	12	326315	Pennyweight 1-1	Maricopa	2016-0222163	7N	3W	29	20	1	\$ 155	Placer		40	Amended to 20 acres March 2016
155	12	437453	Pennyweight 1-2	Maricopa	2016-0222164	7N	3W	29	20	1	\$ 155	Placer			New filing - March 2016
156	12	326327	Pilgrim #1	Maricopa	93 0174153	7N	3W	31	20	1	\$ 155	Placer		20	
157	12	429724	Randy B 1	Maricopa	2014-0584262	7N	3W	30	20	1	\$ 155	Placer		New	
158	12	429725	Randy B 2	Maricopa	2014-0584263	7N	3W	30	20	1	\$ 155	Placer		New	
159	12	429726	Randy B 3	Maricopa	2014-0584264	7N	3W	30	20	1	\$ 155	Placer		New	
160	12	429727	Randy B 4	Maricopa	2014-0584265	7N	3W	30	20	1	\$ 155	Placer		New	
161	12	326772	Range Bull # 1	Maricopa	93 0362063	7N	3W	21	20	1	\$ 155	Placer		20	Actually 40 acres.
162	12	247112	Sando	Maricopa	85 0559653	7N	3W	28	20	1	\$ 155	Placer		20	
163	13	350275	Gold Bug	Maricopa	98 0535738	6N	6W	26	20	1	\$ 155	Placer		20	
164	13	350276	Gold Master	Maricopa	98 0535739	6N	6W	26	20	1	\$ 155	Placer		20	
165	13	350278	Mine Lab	Maricopa	98 0535741	6N	6W	26	20	1	\$ 155	Placer		20	
166	13	331233	Red Basin #1	Maricopa	14 0184527	6N	6W	26	145.45	8	\$ 1,240	Placer		160	OK - 6 person association
167	13	350279	Webster Mine	Maricopa	98 0535742	6N	6W	26	20	1	\$ 155	Placer		20	
168	13	350280	Whistler	Maricopa	98 0535743	6N	6W	26	20	1	\$ 155	Placer		20	
169	13	350281	Wickenburg	Maricopa	98 0535744	6N	6W	26	20	1	\$ 155	Placer		20	
170	14	321061	Lefty #2	Yavapai	2479 560	8N	1E	30	20	1	\$ 155	Placer		20	BLM shows efty #2
171	14	314631	RR-Humbug #3	Yavapai	2360 845	8N	1E	29, 30	20	1	\$ 155	Placer		60	Amended to 20 acres. 08/14.
172	14	429728	RR-Humbug 1-1	Yavapai	2014-0040505	8N	1E	31	20	1	\$ 155	Placer		New	
173	14	429729	RR-Humbug 1-2	Yavapai	2014-0040506	8N	1E	31	20	1	\$ 155	Placer		New	
174	14	429730	RR-Humbug 1-3	Yavapai	2014-0040507	8N	1E	31	20	1	\$ 155	Placer		New	
175	14	429731	RR-Humbug 1-4	Yavapai	2014-0040508	8N	1E	31	20	1	\$ 155	Placer		New	
176	14	429732	RR-Humbug 1-5	Yavapai	2014-0040509	8N	1E	31	20	1	\$ 155	Placer		New	
177	14	429733	RR-Humbug 1-6	Yavapai	2014-0040510	8N	1E	31	20	1	\$ 155	Placer		New	
178	14	429734	RR-Humbug 2-1	Yavapai	2014-0040511	8N	1E	31	20	1	\$ 155	Placer		New	
179	14	429735	RR-Humbug 2-2	Yavapai	2014-0040512	8N	1E	31	20	1	\$ 155	Placer		New	
180	15	244561	Gold Dust #2	Yavapai	1781 510	11N	3E	30	6.88	1	\$ 155	Placer		6.88	
181	15	196365	Turkey Buzzard #1	Yavapai	1529 712	11N	3E	30	13.77	1	\$ 155	Placer		13.77	
182	15	258456	Turkey Buzzard #2	Yavapai	1838 872	11N	3E	30	20	1	\$ 155	Placer		20	
183	15	258457	Turkey Buzzard #3	Yavapai	1838 874	11N	3E	30	20	1	\$ 155	Placer		20	
184	15	258458	Turkey Buzzard #4	Yavapai	1838 876	11N	3E	30	20	1	\$ 155	Placer		20	
185	15	258455	Turkey Buzzard Ext.	Yavapai	1838 870	11N	3E	30	10	1	\$ 155	Placer		10	
186	16	446011	Luck Eleven	Maricopa	2017-0736189	7N	5W	9	20	1	\$ 155	Placer		20	
187	16	430534	Lucky Eight	Maricopa	2015-0077601	7N	5W	3	20	1	\$ 155	Placer		20	
188	16	430535	Lucky Nine	Maricopa	2015-0077602	7N	5W	3	20	1	\$ 155	Placer		20	
189	16	411385	Lucky Seven	Maricopa	2015-0047844	7N	5W	3	20	1	\$ 155	Placer		20	
190	16	446010	Lucky Ten	Maricopa	2017-0736188	7N	5W	4	20	1	\$ 155	Placer		20	
191	17	407030	Carols Corner	Maricopa	11 0623989	7N	3W	18	20	1	\$ 155	Placer		20	
192	17	410364	Golden Sands	Maricopa	11 073563	7N	3W	18	20	1	\$ 155	Placer		20	

RECEIVED  
 PHOENIX, ARIZONA  
 2018 AUG 22 PM 2:21  
 STATE OFFICE

RRPC Master Claims List as of September 1, 2018

\$ 43,865 <<Total Projected Maintenance Fee for 2018

283 \$ 155.00 <Enter Current Rate

#	Map	AMC #	Claim Name	County	Cnty Recorder Data Record/Book Page	Township	Range	Section	Total Acres	20 Acre Segments	Maint. Fee	Lode /Placer	PNF Lands	Original 2012 Acres	Comments
193	17	429716	Ocotillo 1-1	Maricopa	2014-0584274	7N	3W	17, 20	20	1	\$ 155	Placer		New	
194	17	429717	Ocotillo 1-2	Maricopa	2014-0584275	7N	3W	17, 20	20	1	\$ 155	Placer		New	
195	17	429718	Ocotillo 1-3	Maricopa	2014-0584276	7N	3W	17, 20	20	1	\$ 155	Placer		New	
196	17	429719	Ocotillo 1-4	Maricopa	2014-0584277	7N	3W	17, 20	20	1	\$ 155	Placer		New	
197	17	429720	Ocotillo 2-1	Maricopa	2014-0584278	7N	3W	17, 18	20	1	\$ 155	Placer		New	
198	17	429721	Ocotillo 2-2	Maricopa	2014-0584279	7N	3W	17, 18	20	1	\$ 155	Placer		New	
199	17	429722	Ocotillo 2-3	Maricopa	2014-0584280	7N	3W	17, 18	20	1	\$ 155	Placer		New	
200	17	429723	Ocotillo 2-4	Maricopa	2014-0584281	7N	3W	17, 18	20	1	\$ 155	Placer		New	
201	17	327930	Red Bird # 7	Maricopa	93 0897433	7N	3W	17	20	1	\$ 155	Placer		20	Actually 40 acres.
202	17	327931	Red Bird # 8	Maricopa	93 0897432	7N	3W	20	20	1	\$ 155	Placer		20	
203	17	328302	Red Bird # 9	Maricopa	93 0897431	7N	3W	17	20	1	\$ 155	Placer		140	Amended to 20 acres 08/14.
204	17	374726	Roslyn's Roost	Maricopa	06 1445012	7N	3W	17	20	1	\$ 155	Lode		20	Filed as lode claim
205	18	448723	Crook City Gold	Yavapai	2017-0066715	12N	2W	12	20	1	\$ 155	Placer			
206	18	450543	Crooks Canyon Gold #4	Yavapai	2018-0022975	12N	2W	12	20	1	\$ 155	Placer			
207	18	450544	Crooks Canyon Gold #5	Yavapai	2018-0022974	12N	2W	1	20	1	\$ 155	Placer			
208	18	448724	Venezia Gold	Yavapai	2017-0066714	12N	2W	12, 13	20	1	\$ 155	Placer			
209	19	326322	Double R	Maricopa	12 0735517	6N	4W	12	80	4	\$ 620	Placer		160	OK - 5 person association
210	19	329020	RR #1	Maricopa	94 0021782	6N	4W	1	20	1	\$ 155	Placer		20	
211	19	329021	RR #2	Maricopa	94 0021783	6N	4W	1	20	1	\$ 155	Placer		20	
212	19	329022	RR #3	Maricopa	94 0021784	6N	4W	1	20	1	\$ 155	Placer		20	
213	19	329023	RR #4	Maricopa	94 0021785	6N	4W	1	20	1	\$ 155	Placer		20	
214	19	339964	RR #5	Maricopa	96 0488373	6N	4W	1	20	1	\$ 155	Placer		20	
215	19	339965	RR #6	Maricopa	96 0488374	6N	4W	1	20	1	\$ 155	Placer		20	
216	19	364688	RR #7	Maricopa	05 0477984	6N	4W	1	20	1	\$ 155	Placer		20	
217	19	364689	RR #8	Maricopa	05 0477985	6N	4W	1	20	1	\$ 155	Placer		20	
218	21	64830	Catclaw	Yavapai	0912 239	9N	4W	6	20	1	\$ 155	Lode		20	Filed as lode claim
219	21	350910	Devils Nest AU 12	Yavapai	3620 62	9N	4W	6	20	1	\$ 155	Lode		20	Filed as lode claim
220	21	350907	Devils Nest AU 9	Yavapai	3620 60	9N	4W	6	20	1	\$ 155	Lode		20	Filed as lode claim
221	21	251044	Faith #3	Yavapai	1812 836	9N	5W	13	20	1	\$ 155	Placer		20	
222	21	350905	King Duck II	Yavapai	4247 552	10N/9N	4W/4W	31/6	20	1	\$ 155	Lode		20	Filed as lode claim, and BLM shows 4E, sec 6
223	21	429708	Leave No Holes 1	Yavapai	2014-0040513	9N	5W	12	20	1	\$ 155	Placer		New	
224	21	429709	Leave No Holes 2	Yavapai	2014-0040514	9N	5W	12	20	1	\$ 155	Placer		New	
225	21	429710	Leave No Holes 3	Yavapai	2014-0040515	9N	5W	12	20	1	\$ 155	Placer		New	
226	21	429711	Leave No Holes 4	Yavapai	2014-0040516	9N	5W	12	20	1	\$ 155	Placer		New	
227	21	429712	Leave No Holes 5	Yavapai	2014-0040517	9N	5W	12	20	1	\$ 155	Placer		New	
228	21	429713	Leave No Holes 6	Yavapai	2014-0040518	9N	5W	12	20	1	\$ 155	Placer		New	
229	21	429714	Leave No Holes 7	Yavapai	2014-0040519	9N	5W	12	20	1	\$ 155	Placer		New	
230	21	429715	Leave No Holes 8	Yavapai	2014-0040520	9N	5W	12	20	1	\$ 155	Placer		New	
231	21	350906	Little Terry	Yavapai	4247 551	9N	4W	6	20	1	\$ 155	Lode		20	Filed as lode claim
232	21	251047	Lords Blessing	Yavapai	1803 415	9N	5W	13	20	1	\$ 155	Placer		20	
233	21	68531	Thomason	Yavapai	0121 511	9N	4W	7	20	1	\$ 155	Placer		20	
234	22	429675	C-6 Placer 1	La Paz	2014-02950	4N	20W	23	20	1	\$ 155	Placer		New	
235	22	429676	C-6 Placer 2	La Paz	2014-02951	4N	20W	23	20	1	\$ 155	Placer		New	
236	22	429677	C-6 Placer 3	La Paz	2014-02952	4N	20W	23	20	1	\$ 155	Placer		New	
237	22	429678	CD7 Placer 1	La Paz	2014-02953	4N	20W	15	20	1	\$ 155	Placer		New	
238	22	429679	CD7 Placer 2	La Paz	2014-02954	4N	20W	15	20	1	\$ 155	Placer		New	
239	22	429680	CD7 Placer 3	La Paz	2014-02955	4N	20W	15	20	1	\$ 155	Placer		New	
240	22	429681	CD7 Placer 4	La Paz	2014-02956	4N	20W	14	20	1	\$ 155	Placer		New	
241	22	429682	CD7 Placer 5	La Paz	2014-02957	4N	20W	23	20	1	\$ 155	Placer		New	
242	22	429683	CD7 Placer 6	La Paz	2014-02958	4N	20W	23	20	1	\$ 155	Placer		New	
243	22	433937	Diablo Placer 1	La Paz	2015-03207	4N	20W	24	20	1	\$ 155	Placer		New	
244	22	433938	Diablo Placer 2	La Paz	2015-03208	4N	20W	24	20	1	\$ 155	Placer		New	
245	22	433939	Diablo Placer 3	La Paz	2015-03209	4N	20W	23	20	1	\$ 155	Placer		New	
246	22	433940	Diablo Placer 4	La Paz	2015-03210	4N	20W	23	20	1	\$ 155	Placer		New	
247	22	440315	Diablo Placer 5	La Paz	2016-03907	4N	20W	23	20	1	\$ 155	Placer		New	
248	22	440316	Diablo Placer 6	La Paz	2016-03908	4N	20W	23	20	1	\$ 155	Placer		New	
249	22	440317	Diablo Placer 7	La Paz	2016-03909	4N	20W	23	20	1	\$ 155	Placer		New	
250	22	440318	Diablo Placer 8	La Paz	2016-03910	4N	20W	23	10	1	\$ 155	Placer		New	
251	22	435566	Eastside Placer 1	La Paz	2015-04234	4N	20W	23	20	1	\$ 155	Placer		New	
252	22	435567	Eastside Placer 2	La Paz	2015-04236	4N	20W	23	20	1	\$ 155	Placer		New	
253	22	435568	Eastside Placer 3	La Paz	2015-04235	4N	20W	23	10	1	\$ 155	Placer		New	
254	23	326754	Keystone #1	Pinal	1922 836	5S	15E	4	20	1	\$ 155	Placer		20	
255	23	326764	Keystone #11	Pinal	1922 856	5S	15E	4	20	1	\$ 155	Placer		20	
256	23	326765	Keystone #12	Pinal	1922 858	5S	15E	4	20	1	\$ 155	Placer		20	

RECEIVED  
 PHOENIX, ARIZONA  
 2018 AUG 22 P 2: 21  
 MARICOPA STATE OFFICE

RRPC Master Claims List as of September 1, 2018

\$ 43,865 <<Total Projected Maintenance Fee for 2018

283 \$ 155.00 <Enter Current Rate

#	Map	AMC #	Claim Name	County	Cnty Recorder Data Record/Book Page	Township	Range	Section	Total Acres	20 Acre Segments	Maint. Fee	Lode /Placer	PNF Lands	Original 2012 Acres	Comments
257	23	326757	Keystone #4	Pinal	1922 842	5S	15E	4	20	1	\$ 155	Placer		20	
258	23	326758	Keystone #5	Pinal	1922 844	5S	15E	4	20	1	\$ 155	Placer		20	
259	23	326760	Keystone #7	Pinal	1922 848	5S	15E	4	20	1	\$ 155	Placer		20	
260	23	326761	Keystone #8	Pinal	1922 850	5S	15E	4	20	1	\$ 155	Placer		20	
261	23	326762	Keystone #9	Pinal	1922 852	5S	15E	4	20	1	\$ 155	Placer		20	
262	24	451088	C and S Honey Hole	Yavapai	2018-0022978	11N	1E	25	20	1	\$ 155	Placer	PNF	New	May-18
263	24	451089	Ron's Roost	Yavapai	2018-0022979	11N	1E	25	20	1	\$ 155	Placer	PNF	New	May-18
264	24	451091	Wayne's World	Yavapai	2018-0022977	11N	1E	36	20	1	\$ 155	Placer	PNF	New	May-18
265	26	429669	Bumble Bee King 1	Yavapai	2014-0040521	9N	2E	5	20	1	\$ 155	Placer		New	
266	26	429670	Bumble Bee King 2	Yavapai	2014-0040522	9N	2E	5	20	1	\$ 155	Placer		New	
267	26	429671	Bumble Bee King 3	Yavapai	2014-0040523	9N	2E	5	20	1	\$ 155	Placer		New	
268	26	429672	Bumble Bee King 4	Yavapai	2014-0040524	9N	2E	5	20	1	\$ 155	Placer		New	
269	26	429673	Bumble Bee King 5	Yavapai	2014-0040525	9N	2E	5	20	1	\$ 155	Placer		New	
270	26	429674	Bumble Bee King 6	Yavapai	2014-0040526	9N	2E	5	20	1	\$ 155	Placer		New	
271	27	314304	Oro De Valenzuela	Yavapai	3436 378	11N	1E	14	20	1	\$ 155	Placer	PNF	23.42	Amended to 20 acres 08/14.
272	28	364340	Mary Francis	Yavapai	3824744 4236 718	13N	1E	29	16	1	\$ 155	Placer		16	

5,548.9 283 \$ 43,865

283 segments x \$155 = \$ 43,865

Notes:

Au Sum 1 and Wolf 4 are duplicated in BLM records.  
 All 11 lode claims are listed as 20.66 acres, not 20 acres,  
 Col. J = Acreage recorded by BLM

451098 OK  
 451089  
 C 451080

RECEIVED  
 PHOENIX, ARIZONA  
 2018 AUG 22 P 2: 22

**United States Department of the Interior**  
**Bureau of Land Management**  
 DIV OF LANDS, MINRLS & ENERGY  
 ONE N CENTRAL AVE  
 PHOENIX, AZ 85004 -4427  
 Phone: 602-417-9200

Receipt

No: 4241956

<b>Transaction #:</b> 4357380	
<b>Date of Transaction:</b> 08/22/2018	
<b>CUSTOMER:</b>	
ROADRUNNER PROSPECTORS CLUB INC PO BOX 56804 PHOENIX, AZ 85079-6804 US	

LINE #	QTY	DESCRIPTION	REMARKS	UNIT PRICE	TOTAL
1	1.00	LOCATABLE MINERALS / MINING CLAIMS-NOT NEW-UNADJUD, ONE AUTH NO. ONLY / MINING CLAIM MONEY RECEIVED CASES: AMC374513/\$43865.00	2019 MAINT/283	- n/a -	43865.00
<b>TOTAL:</b>					<b>\$43,865.00</b>

PAYMENT INFORMATION			
1	AMOUNT:	43865.00	POSTMARKED: N/A
	TYPE:	CHECK	RECEIVED: 08/22/2018
	CHECK NO:	9459	
	NAME:	ROADRUNNER PROSPECTORS CLUB INC PO BOX 56804 PHOENIX AZ 85079-6804 US	

REMARKS

This receipt was generated by the automated BLM Collections and Billing System and is a paper representation of a portion of the official electronic record contained therein.

**NOTICE!!**

**These documents have been scanned!**

**Do not place un-scanned documents beneath this notice!**

**Do not remove this notice from this file!**

GPO Jacket No. 560-102  
Print Order 61540  
Rise Business Services, LLC  
Job=AZ15 4/29/2019



Box Number= AZ15005



Claim Begin-End: AMC446010-AMC446011

5 Miscellaneous



AZ15005-18

AMC450400-AMC453366



**NO  
DOCUMENTS  
FOUND**

NO DOCUMENTS FOUND  
NO DOCUMENTS FOUND

**NOTICE!!**

**These documents have been scanned!**

**Do not place un-scanned documents beneath this notice!**

**Do not remove this notice from this file!**

GPO Jacket No. 560-102  
Print Order 61540  
Rise Business Services, LLC  
Job=AZ15 4/29/2019



Box Number= AZ15005



Claim Begin-End: AMC446010-AMC446011

6 Location Notices-Amendments and Supporting Documents



AZ15005-18 AMC450400-AMC453366

# MINING CLAIM STATUS REPORT

Data Entered: 10/18/17 Rum

MTP Checked By: [Signature]  
GEO Checked By: [Signature]

LEAD SERIAL NUMBER: AMC 446010 thru AMC 446011

**NUMBER OF CLAIMS & TYPE:**

2 LODGE  
2 PLACER  
ASSOCIATION PLACER  
MILL SITE  
TUNNEL SITE

**CHARGES:**

Processing Fee @ \$20 = \$ 40  
Location Fee @ \$37 = \$ 74  
Maintenance Fee @ \$155 = \$ 310  
Add'l Maint Fee for Assoc Placer = \$  
**SUBTOTAL** \$  
Other Fees \$  
Other Fees \$  
**TOTAL** \$ 424

**TOTAL ACREAGE:** 20 Per Claim  
(Placer Only)

**NUMBER OF LOCATORS:** 1

**DOCUMENTS RECEIVED VIA:** Over-the-Counter  Mail  **TIMELY FILED:** Yes  No

**LEGAL DESCRIPTION:**  
T 6N R 5W SEC 4  
T 6N R 5W SEC 9  
T \_\_\_\_\_ R \_\_\_\_\_ SEC \_\_\_\_\_  
T \_\_\_\_\_ R \_\_\_\_\_ SEC \_\_\_\_\_  
T \_\_\_\_\_ R \_\_\_\_\_ SEC \_\_\_\_\_

BLM  FOREST SERVICE  SUBJ TO PL 359: Yes  No   
WILDERNESS AREA

**SPLIT ESTATE:** N/A  SX  PX  OTHER   
SRHA  Was proper Notice filed if located on SHRA Land? Yes  No

**RECONVEYED MINERALS ON BLM LAND REQUIRE OPENING ORDER FROM 1944 TO 1993:**

Open to Entry On \_\_\_\_\_ N/A

**COMMENTS/STATUS:** VOID  PARTIALLY VOID  PVT MINERALS  WITHDRAWN LANDS   
OTHER

Claimant acknowledges that portions of the following claim(s) site(s) may be void or voidable.

Printed Name of Claimant \_\_\_\_\_ Signature of Claimant \_\_\_\_\_

\*\*\*\*\*FINAL ADJUDICATION\*\*\*\*\*

DATE 5/18/2018 INITIALS [Signature]

AMC446010

When recorded mail to:

Roadrunner Prospectors' Club, Inc.  
PO Box 56804  
Phoenix, AZ 85079

OFFICIAL RECORDS OF  
MARICOPA COUNTY RECORDER  
ADRIAN FONTES  
2017-0736188 10/04/17 01:16  
PAPER RECORDING

[ ] Check here if this is a change of address

0900475-2-2-1  
Hoyp

Telephone: (602) 274-2521  
Email: rrpc-office@roadrunnergold.com

LOCATION NOTICE FOR PLACER MINING CLAIM

[ ] Amendment BLM Serial # \_\_\_\_\_

NOTICE IS HEREBY GIVEN that the LUCY  
TEN placer mining claim has been located by

Roadrunner Prospectors' Club, Inc. whose current mailing

address is: PO Box 56804

Phoenix, AZ 85079

RECEIVED	BLM AZ STATE OFFICE	2017 OCT 11 P 2:42	PHOENIX, ARIZONA
BLM Date Stamp			

The general course of this claim is east to west and it is situated in Maricopa  
County, Arizona. This claim is 1320 feet in length and 660 feet in width.

20 Total Claim Acreage. This claim runs from the location monument on which this location notice is  
posted at the SE corner of the claim approximately 1320 feet in a West direction to the  
West end line and 0 feet in a East direction to the East end line. This claim is  
marked by four monuments, one at each corner of the claim.

The location monument on which this notice is posted is situated within Section 4, Township  
6 N, Range 5 W, Gila Salt River Base and Meridian, Arizona. This claim encompasses  
portions of the following legal subdivision(s) if located by legal subdivision or the following quarter section (s),  
section (s), Township (s) and Range(s) SE 1/2 OF SE 1/4 OF SE 1/4 Section 4  
T6N, R5W, Gila Salt River Base and Meridian, Arizona.

The locality of this claim with reference to some natural object or permanent monument and additional information  
(if any) concerning its locality are as follows: The S/E corner of the claim  
is 0 feet from common corner of sections 3, 4, 9 + 10, T6N, R5W,  
GSRB + M. The above information is shown on the attached map.

DATED AND POSTED on the ground this 30TH day of September 2017

[ ] LOCATOR (s) [X] AGENT

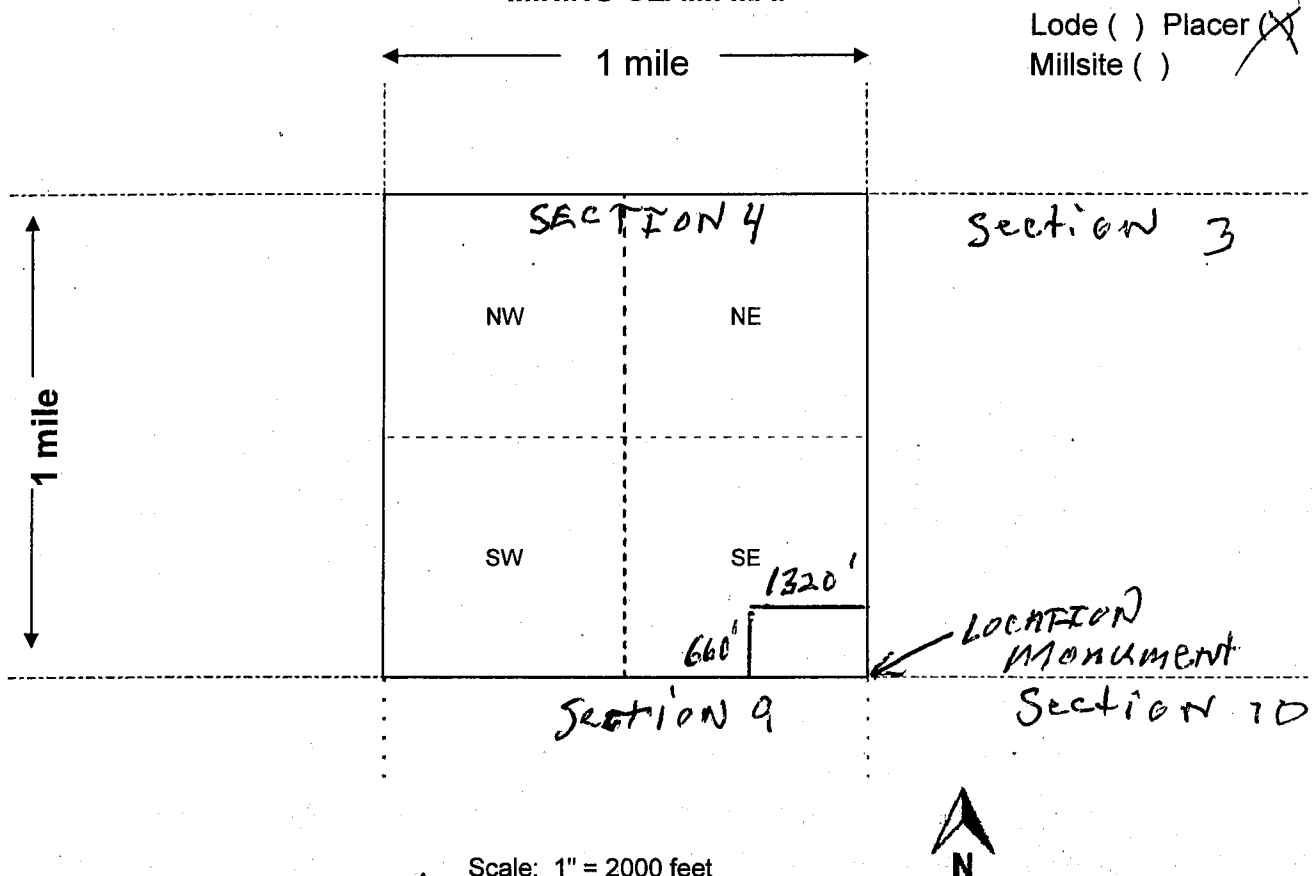
Print Name(s) ROBERT HOOD

Signature(s) Robert Hood agent

Form MCF102  
Revised July 2014

AMC446010

**MINING CLAIM MAP**



Lode ( ) Placer   
 Millsite ( )

Scale: 1" = 2000 feet

- The above map depicts the LUCKY TEN mining claim, which is located in Section (s) 4, Township 6 N, Range 5 W, Gila and Salt River Base and Meridian, Maricopa County, Arizona. Total claim acreage is 20
- The type of corner and location monuments used are as follows: capped PVC pipe over steel posts
- The bearings and distances in degrees and feet between claim corners and to a public land survey monument are as depicted on the map.
- If the claim is a placer or millsite claim with exterior limits conforming to legal subdivisions of the public survey, provide a legal description of the claim SE 1/2, SE 1/4, SE 1/4 OF SECTION 4, TOWNSHIP 6 N, RANGE 5 W, GSRB+M.

Form MCF100a  
 Revised July 2014

When recorded mail to:

Roadrunner Prospectors' Club, Inc.  
PO Box 56804  
Phoenix, AZ 85079

OFFICIAL RECORDS OF  
MARICOPA COUNTY RECORDER  
ADRIAN FONTES  
2017-0736189 10/04/17 01:16  
PAPER RECORDING

[ ] Check here if this is a change of address

0900475-2-2-2  
Hoyp

Telephone: (602) 274-2521  
Email: rrpc-office@roadrunnergold.com

LOCATION NOTICE FOR PLACER MINING CLAIM

[ ] Amendment BLM Serial # \_\_\_\_\_

NOTICE IS HEREBY GIVEN that the LUCKY  
ELEVEN placer mining claim has been located by

Roadrunner Prospectors' Club, Inc. whose current mailing  
address is: PO Box 56804

Phoenix, AZ 85079

BLM Date Stamp	PHOENIX, ARIZONA	2017 OCT 11 P 2:42	BLM AZ STATE OFFICE
		RECEIVED	

The general course of this claim is EAST TO WEST and it is situated in MARICOPA  
County, Arizona. This claim is 1320 feet in length and 660 feet in width.

20 Total Claim Acreage. This claim runs from the location monument on which this location notice is  
posted at the NE corner of the claim approximately 1320 feet in a WEST direction to the  
WEST end line and 0 feet in a EAST direction to the EAST end line. This claim is  
marked by four monuments, one at each corner of the claim.

The location monument on which this notice is posted is situated within Section 9, Township  
6 N, Range 5 W, Gila Salt River Base and Meridian, Arizona. This claim encompasses

portions of the following legal subdivision(s) if located by legal subdivision or the following quarter section (s),  
section (s), Township (s) and Range(s) NE 1/2 OF NE 1/4 OF NE 1/4 OF SECTION 9  
T6N R5W, Gila Salt River Base and Meridian, Arizona.

The locality of this claim with reference to some natural object or permanent monument and additional information  
(if any) concerning its locality are as follows: THE NE CORNER OF THE CLAIM IS 0 FEET

FROM THE COMMON CORNER OF SECTIONS 3, 4, 9 AND 10,  
T6N R5W GSR B&M The above information is shown on the attached map.

DATED AND POSTED on the ground this 30<sup>TH</sup> day of SEPTEMBER, 2017.

[ ] LOCATOR (s)  AGENT

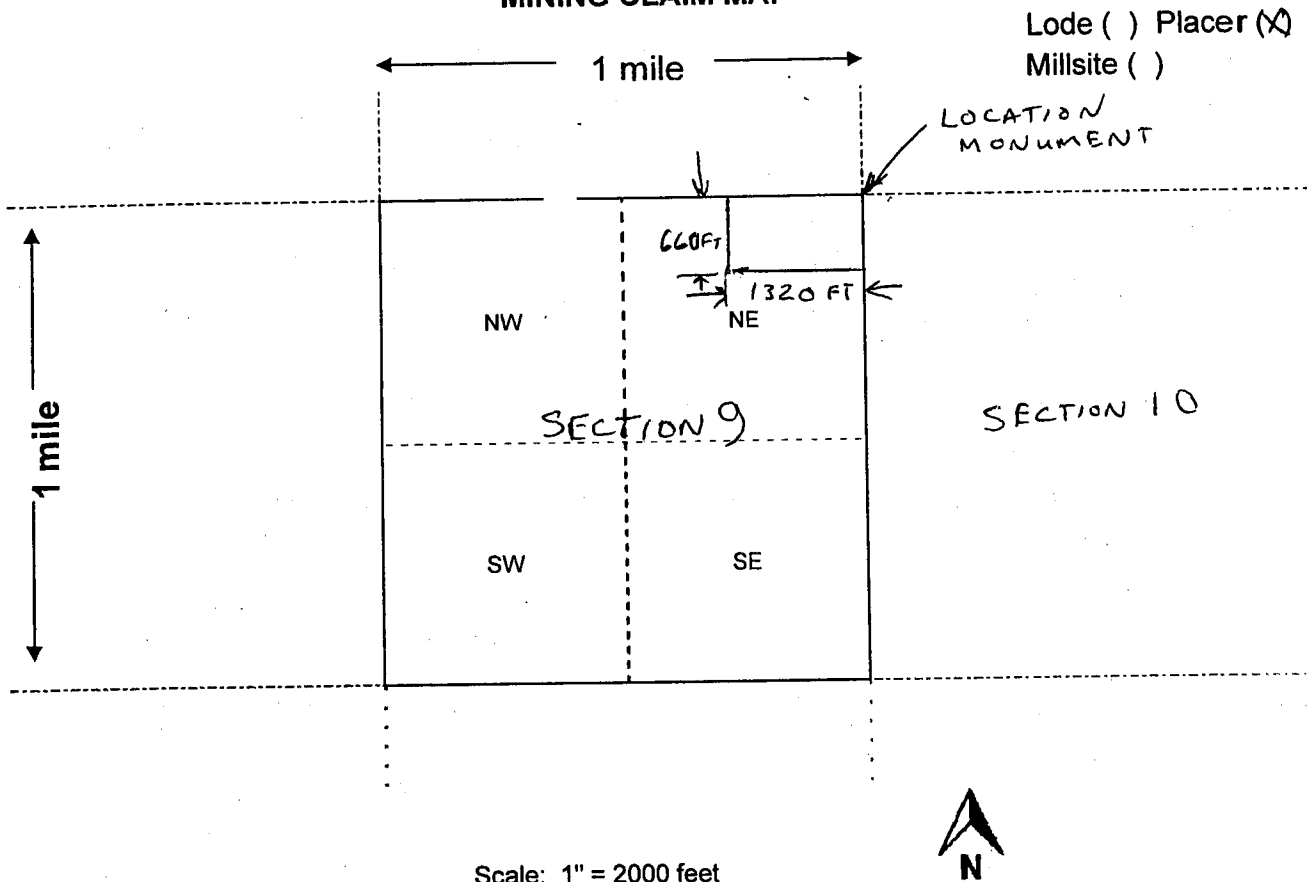
Print Name(s) ROBERT HOOD

Signature(s) Robert Hood - agent

Form MCF102  
Revised July 2014

AMC446011

**MINING CLAIM MAP**



Scale: 1" = 2000 feet



1. The above map depicts the LUCKY ELEVEN mining claim, which is located in Section (s) 9, Township 6 N, Range 5 W, Gila and Salt River Base and Meridian, MARICOPA County, Arizona. Total claim acreage is 20

2. The type of corner and location monuments used are as follows: CAPPED PVC PIPE OVER STEEL POSTS

3. The bearings and distances in degrees and feet between claim corners and to a public land survey monument are as depicted on the map.

4. If the claim is a placer or millsite claim with exterior limits conforming to legal subdivisions of the public survey, provide a legal description of the claim NE 1/2 OF NE 1/4 OF NE 1/4 OF SECTION 9 TOWNSHIP 6 N, RANGE 5 W GSP BAND M

Form MCF100a  
Revised July 2014

Input Parameters for Geographic Report with Land

System Id = CR

Admin State = AZ

Geo State =

Casetype =

Casetype Txt =

Case Disp Txt = AUTHORIZED, CANCELLED, EXPIRED, PENDING, REJECTED, RELINQUISHED, VOID, WITHDRAWN

Mer Twp Rng =

Mtrs = 14 0060N 0050W 004, 14 0060N 0050W 009, 14 0060N 0050W 999

Commodity =

Commodity Txt =

Adm Agency Begins With

Total Rows Returned: 7



RUN DATE: 10/11/17 03:37 PM  
STATE: AZ

UNITED STATES DEPARTMENT OF THE INTERIOR  
BUREAU OF LAND MANAGEMENT  
GEOGRAPHIC REPORT WITH LAND  
SORTED BY SERIAL NUMBER

Page 1 of 1

Serial Number: AZA 031568  
Total Case Acres: 1.000

<u>Casetype</u>	<u>Case Disp</u>	<u>MER</u>	<u>TWP</u>	<u>RNG</u>	<u>SEC</u>	<u>SUR TYPE</u>	<u>SUR NR</u>	<u>SUF</u>	<u>SUBDIVISION</u>	<u>ACT PEND</u>
293200	EXPIRED	14	0060N	0050W	004	FF			PORTION OF;	

Serial Number: AZA 032499  
Total Case Acres: 1.000

<u>Casetype</u>	<u>Case Disp</u>	<u>MER</u>	<u>TWP</u>	<u>RNG</u>	<u>SEC</u>	<u>SUR TYPE</u>	<u>SUR NR</u>	<u>SUF</u>	<u>SUBDIVISION</u>	<u>ACT PEND</u>
293200	EXPIRED	14	0060N	0050W	004	FF			PORTION OF;	
					009	FF			PORTION OF;	

Serial Number: AZA 035151  
Total Case Acres: 1.000

<u>Casetype</u>	<u>Case Disp</u>	<u>MER</u>	<u>TWP</u>	<u>RNG</u>	<u>SEC</u>	<u>SUR TYPE</u>	<u>SUR NR</u>	<u>SUF</u>	<u>SUBDIVISION</u>	<u>ACT PEND</u>
293200	PENDING	14	0060N	0050W	004	FF			PORTION OF;	
					009	FF			PORTION OF;	

Serial Number: AZA 036762  
Total Case Acres: 16480.000

<u>Casetype</u>	<u>Case Disp</u>	<u>MER</u>	<u>TWP</u>	<u>RNG</u>	<u>SEC</u>	<u>SUR TYPE</u>	<u>SUR NR</u>	<u>SUF</u>	<u>SUBDIVISION</u>	<u>ACT PEND</u>
380099	PENDING	14	0060N	0050W	004	ALIQ			S2;	
					009	ALIQ			ALL;	

NO WARRANTY IS MADE BY BLM  
FOR USE OF THE DATA FOR  
PURPOSES NOT INTENDED BY THE BLM

